



Former Corporate HQ - Turner Industrial Corridor

5300 Speaker Rd, Kansas City, Kansas 66106



Sale Price: \$2,142,030 | 19,473 SF Building on 1.47 Acres

DEMOGRAPHICS

	1 mile	3 miles	5 miles
Estimated Population	1,155	47,729	150,780
Avg. Household Income	\$63,766	\$72,557	\$76,801

- 19,473 SF headquarters building with warehouse functionality
- 75% office buildout, 25% warehouse with drive in door
- 70 surface parking spaces
- Situated within the established Turner Industrial Corridor, surrounded by national distributors, manufacturers, and service users
- Direct access to I-70, I-635, and KS-32

 [CLICK HERE TO VIEW MORE LISTING INFORMATION](#)

For More Information Contact: *Exclusive Agents*
WILL SANDERS | 816.412.7303 | wsanders@blockandco.com
DAVID BLOCK | 816.412.7400 | dblock@blockandco.com



PHOTOS

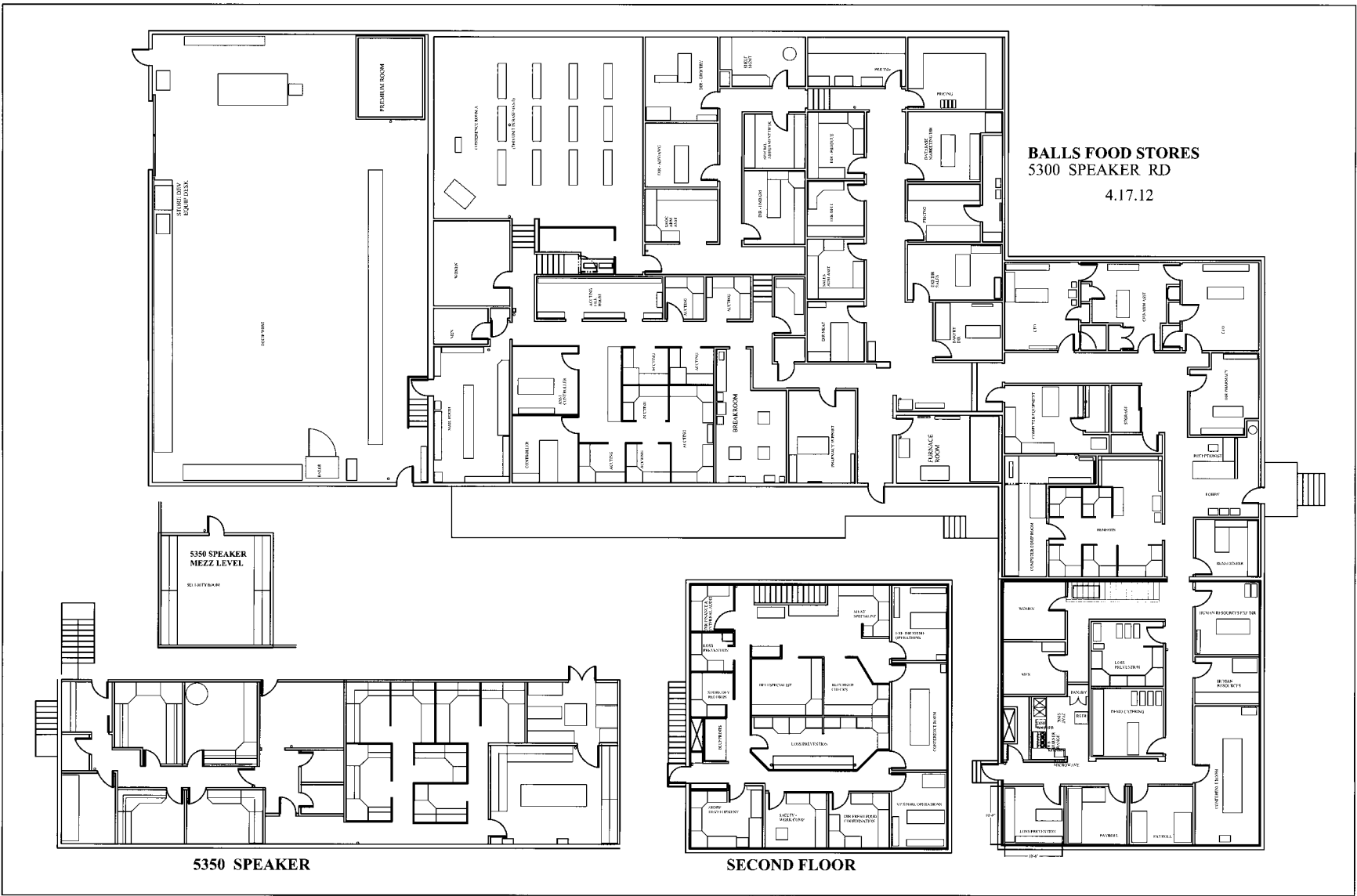




Former Corporate HQ - Turner Industrial Corridor

5300 Speaker Rd, Kansas City, Kansas 66106

FLOOR PLAN





Former Corporate HQ - Turner Industrial Corridor

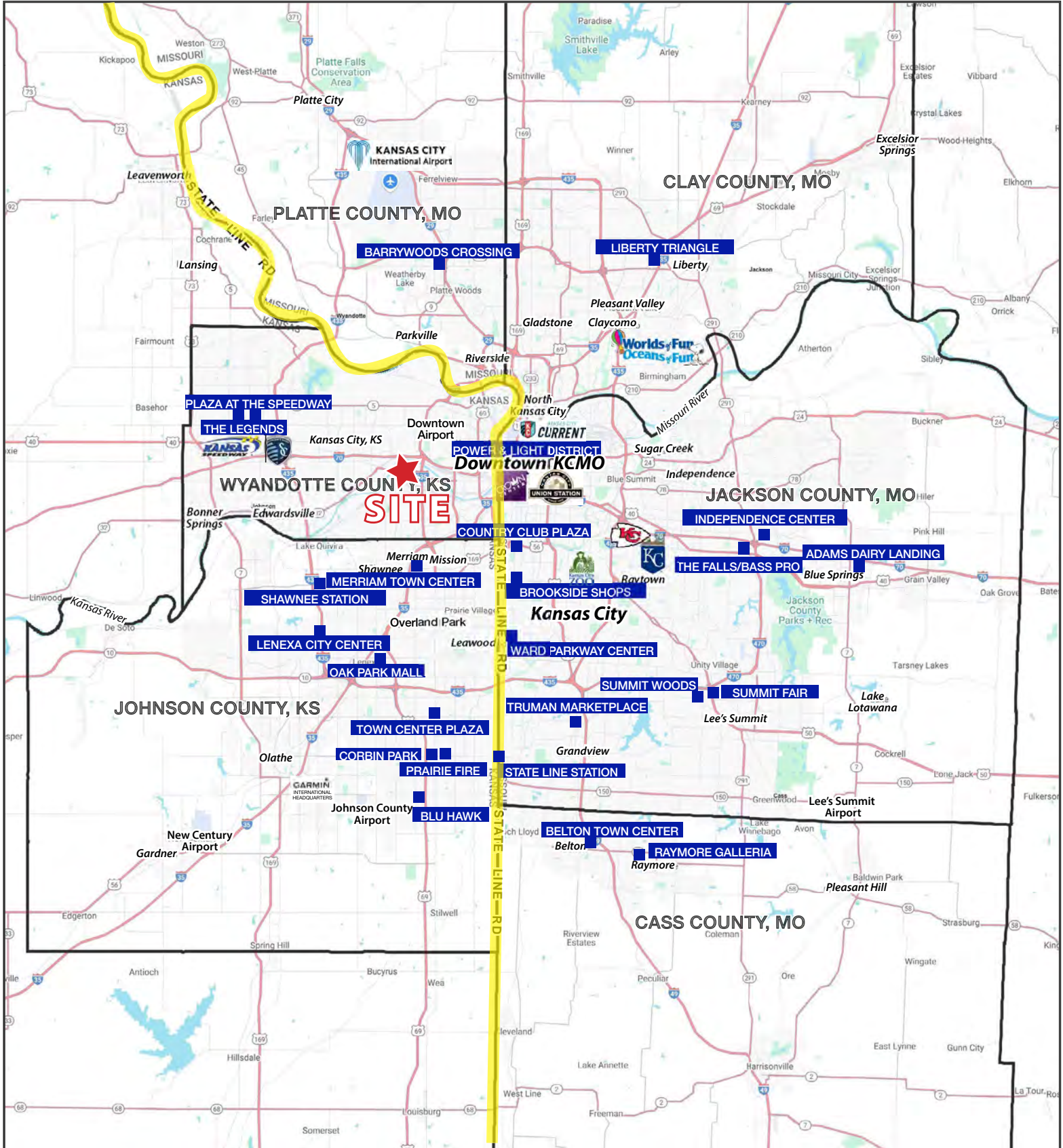
5300 Speaker Rd, Kansas City, Kansas 66106

AERIAL





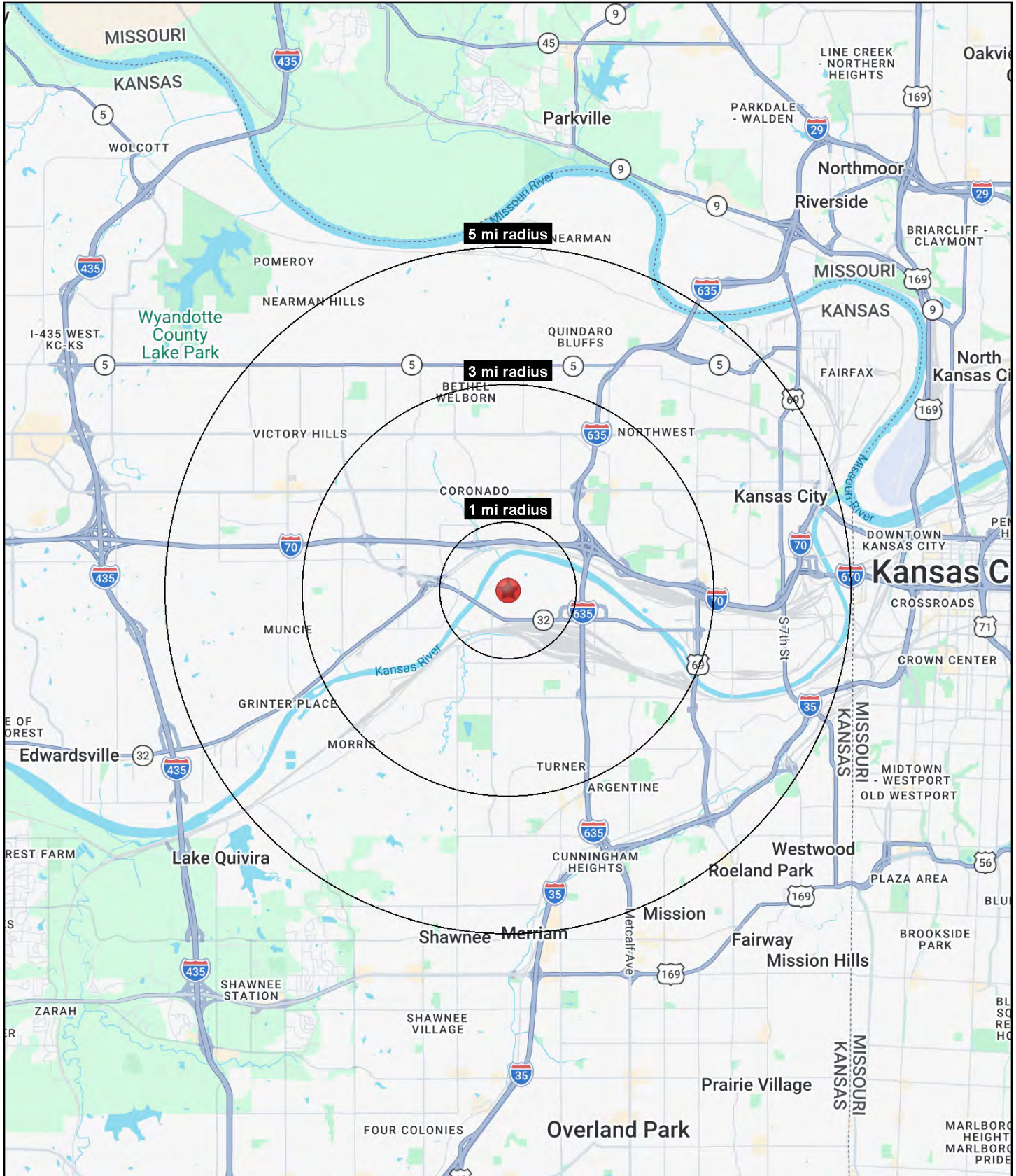
Former Corporate HQ - Turner Industrial Corridor 5300 Speaker Rd, Kansas City, Kansas 66106





Former Corporate HQ - Turner Industrial Corridor

5300 Speaker Rd, Kansas City, Kansas 66106





Former Corporate HQ - Turner Industrial Corridor

5300 Speaker Rd, Kansas City, Kansas 66106

5300 Speaker Road Kansas City, KS 66106	1 mi radius	3 mi radius	5 mi radius
Population			
2025 Estimated Population	1,155	47,729	150,780
2030 Projected Population	1,177	47,034	148,323
2020 Census Population	1,122	46,850	149,167
2010 Census Population	1,064	44,999	144,609
Projected Annual Growth 2025 to 2030	0.4%	-0.3%	-0.3%
Historical Annual Growth 2010 to 2025	0.6%	0.4%	0.3%
2025 Median Age	34.5	32.0	33.4
Households			
2025 Estimated Households	412	16,488	55,500
2030 Projected Households	419	16,463	55,314
2020 Census Households	443	16,555	55,468
2010 Census Households	421	15,931	54,223
Projected Annual Growth 2025 to 2030	0.4%	-	-
Historical Annual Growth 2010 to 2025	-0.2%	0.2%	0.2%
Race and Ethnicity			
2025 Estimated White	59.6%	40.4%	44.7%
2025 Estimated Black or African American	10.9%	19.9%	19.7%
2025 Estimated Asian or Pacific Islander	2.9%	6.3%	6.3%
2025 Estimated American Indian or Native Alaskan	1.3%	1.1%	1.0%
2025 Estimated Other Races	25.2%	32.3%	28.3%
2025 Estimated Hispanic	35.2%	40.0%	34.6%
Income			
2025 Estimated Average Household Income	\$63,766	\$72,557	\$76,801
2025 Estimated Median Household Income	\$59,982	\$57,674	\$62,116
2025 Estimated Per Capita Income	\$22,724	\$25,100	\$28,389
Education (Age 25+)			
2025 Estimated Elementary (Grade Level 0 to 8)	2.5%	10.6%	9.4%
2025 Estimated Some High School (Grade Level 9 to 11)	12.9%	11.8%	9.5%
2025 Estimated High School Graduate	39.8%	34.3%	31.2%
2025 Estimated Some College	20.7%	20.8%	20.3%
2025 Estimated Associates Degree Only	8.7%	8.2%	8.3%
2025 Estimated Bachelors Degree Only	13.6%	10.0%	14.1%
2025 Estimated Graduate Degree	1.9%	4.4%	7.2%
Business			
2025 Estimated Total Businesses	106	934	3,636
2025 Estimated Total Employees	3,286	16,149	53,030
2025 Estimated Employee Population per Business	31.0	17.3	14.6
2025 Estimated Residential Population per Business	10.9	51.1	41.5

©2026, Sites USA, Chandler, Arizona, 480-491-1112 Demographic Source: Applied Geographic Solutions 11/2025, TIGER Geography - RS1